


[Long Island](#) [Sports](#) [Entertainment](#) [Lifestyle](#) [News](#) **[Business](#)** [Health](#) [Opinion](#) [Obituaries](#) [Cars](#) [Homes](#) [Jobs](#)

Business

Canon makes big move to new Melville headquarters

Updated February 18, 2013 12:01 AM

By JAMES T. MADORE james.madore@newsday.com


 Reprints  [A+](#) [A-](#)



The new Canon U.S.A. headquarters building on Walt Whitman Road at the intersection of the Long Island Expressway South Service Road in Melville. Photo Credit:

 [Long Island](#) [Sports](#) [Entertainment](#) [Lifestyle](#) [News](#) [Business](#) [Health](#) [Opinion](#) [Obituaries](#) [Cars](#) [Homes](#) [Jobs](#)

 SEARCH

Canon's quarter-century pursuit of a new headquarters ends Tuesday when 700 employees move into a \$600 million glass structure on  in Melville where pumpkins once grew.

One Canon Park will serve as the company's regional headquarters for North and South America. The photography and copier giant has similar offices in [Tokyo](#) and London.

Over the years, plans by Canon to move from [Lake Success](#) to [Westbury](#) or [Brookville](#) fell by the wayside. [Connecticut](#) and [New Jersey](#) came calling, but company executives selected Melville, in part because its rank and file didn't want to leave the area.

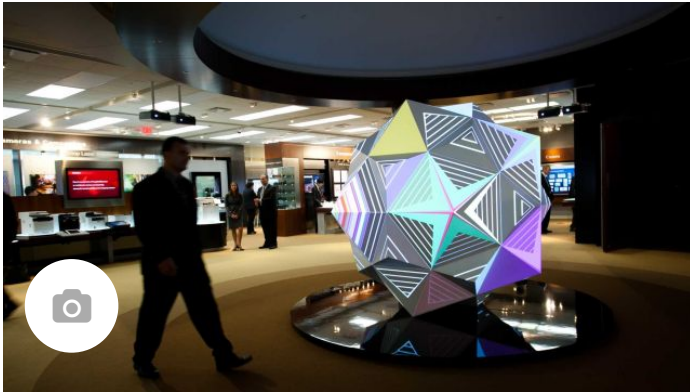
"We wanted to stay on [Long Island](#) because most of our employees live here, and we didn't want to jeopardize our company by losing a substantial part of the workforce," said Seymour Liebman, Canon's point man for more than 25 years on the project to consolidate offices.

Canon received about \$100 million in government aid, including tax breaks from [New York State](#) and [Suffolk County](#), and an extra lane on each of the [Long Island Expressway](#) service roads. The 668,296-square-foot building is near Exit 49 of the LIE.

About 100 employees in the facilities and information technology departments have been working in Melville for about a month. They'll be joined Tuesday by 700 members of the administrative and sales staffs. The final 600 to

[f](#) [t](#) [e](#) [p](#) [i](#) [g](#) [i](#) [e](#) arly next month.

By April 30, Canon expects to have vacated four offices in Lake Success and one in [Manhasset](#) -- all of them rented.



Business

Canon U.S.A.

Canon U.S.A. is planning this [move] for at least a year," said Liebman, chief administrative officer and general counsel at Canon U.S.A. and first non-Japanese member of the parent company's board of directors.

Employees received frequent updates about the building's construction, which began nearly three years ago. They took tours and saw their respective work stations in late January and this month.

A number of finishing touches remain to be done on the building and grounds. Construction continues on a product showroom and fitness center. Cherry trees will be planted in the spring and fish put into two ponds.

Still, Liebman couldn't contain his excitement in an interview last week: "It's basically a new start for our company; it's a new era."

The same could be said about the project's potential impact on the Island's economy, according to some economic developers and elected officials who worked on the Canon deal.

"This is a boost to the economy, a boost to the psyche of our region," said [Steve Levy](#), a former Suffolk County executive. "Outsiders will look at us as friendly to business."

In December 2006, [Levy](#) helped mediate a land dispute that threatened to scuttle Canon's purchase of the 52 acres for its headquarters. The parcel was the final one on Long Island that the company would consider; otherwise, it was off to another state, Liebman said.

Two real estate developers were fighting over who had the right to sell the former pumpkin farm to Canon. "The deal was unraveling . . . I just felt we couldn't lose those jobs," Levy recalled.

200,000 square feet to the building.

Newsday Biz Staff

A Twitter list by [@NewsdayBiz](#)

Reporters and editors covering business for Newsday.

David Reich-Hale Retweeted



Ben Shapiro @benshapiro

This Shabbat I told my three-year-old she couldn't have more candy. She immediately registered for counseling at Berkeley.

8h



Ken Schachter @kschach

I count at least four Pac12 QBs who would be legit NFL first rounders (not all are seniors)

9h



Ken Schachter @kschach

Takeaways from #OregonDucks game: Herbert is real deal; secondary has playmakers; defense is improved; Play-calling was too predictable

10h

[Embed](#)

[View on Twitter](#)

Liebman said, "We're glad to finally have something we can call home."

[f](#) [t](#) [l](#) [p](#) [g+](#) [e](#) [A NEW HQ](#)

1971: Canon USA arrives on Long Island.

1988: Building moratorium thwarts plan to move to Roosevelt Raceway in Westbury.

1992: Brookville Village rejects proposed headquarters on land owned by the New York Institute of Technology.

2007: Company buys 52-acre former pumpkin farm on Walt Whitman Road near Exit 49 of the LIE.



Business

See who got hired, promoted on Long Island
2009: U.S. division executives seek authorization for Melville headquarters from Canon's board of directors in Tokyo.

2010: Huntington Town approves \$500-million project in March; construction begins in May.

TUESDAY: First large group of employees moves into new headquarters.

Get the Biz Briefing newsletter!

The latest LI business news in your inbox daily.

Email address

I'm not a robot

reCAPTCHA
Privacy - Terms

SIGN UP

By clicking Sign up, you agree to our privacy policy.



[Click here to read or post comments](#)



More coverage



Huntington eyes wind turbine code, Canon plan



Services

- Subscribe**
- Manage my Newsday**
- Today's paper**
- Join us on Facebook**
- Join us on Twitter**
- Sign up for newsletters**
- Get our Apps**
- Newsday mobile**

Our Network

- News 12
- am New York
- Newsday Cars
- The Hometown Shopper
- Newsday Homes
- Newsday Jobs
- Optimum
- Newsday Connect
- News 12 Varsity

News

- Long Island
- Nassau
- Suffolk
- Education
- Crime
- Politics
- Towns
- NYC
- U.S. / World
- Business
- Technology
- Commuting
- History
- Data and Maps
- Traffic
- Obituaries

Sports

- Giants
- Jets
- Knicks
- Nets
- Islanders
- Rangers
- Yankees
- Mets
- High school
- Colleges
- Columns
- Scores
- Videos
- Photo

Entertainment

- Celebrities
- Circus
- Movies
- TV
- Music
- Restaurants
- Theater
- Lifestyle
- Family
- Shopping
- Pets
- Events
- Travel
- Books
- Weekend Guide
- Beaches
- Nassau Coliseum

Classifieds

- Jobs
- Cars
- Real Estate
- Yellow Pages

More

- Crossword
- Weather
- Photos
- Videos
- LI Life
- Act 2
- Lottery
- RSS
- Archive

