

Database Attributes:

N_DATUM = floating datum

F_DATUM = final datum

S_STATIC = (F_DATUM - ELEV + DEPTH) / DATUMVEL

R_STATIC = [(F_DATUM - ELEV + DEPTH) / DATUMVEL] - UPHOLE

C_STATIC = 2 * [(N_DATUM - F_DATUM) / DATUMVEL]

Trace Header Values:

N_DATUM = floating datum

NMO_STAT = S_STATIC + R_STATIC + C_STATIC

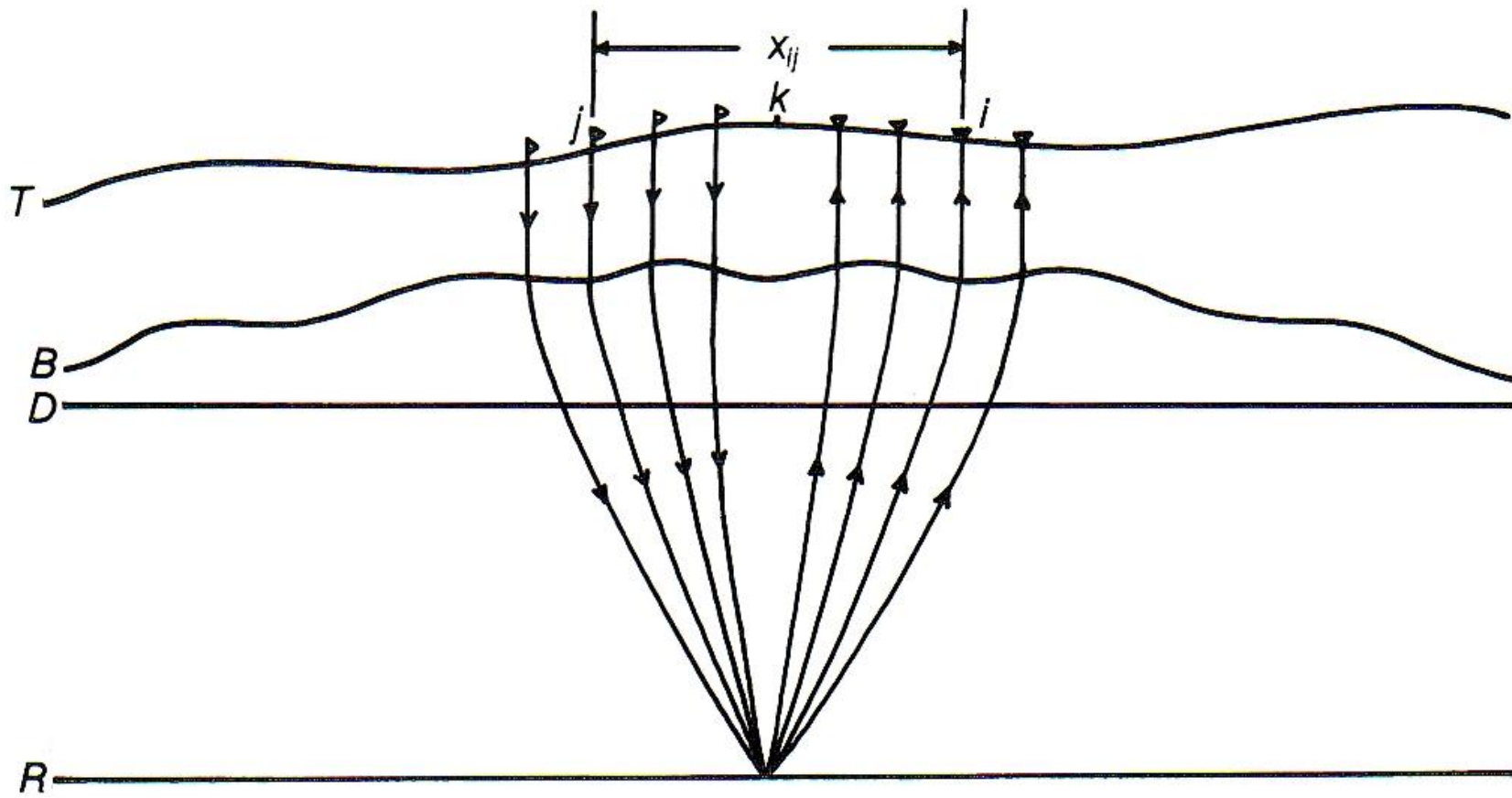
FNL_STAT = - C_STATIC

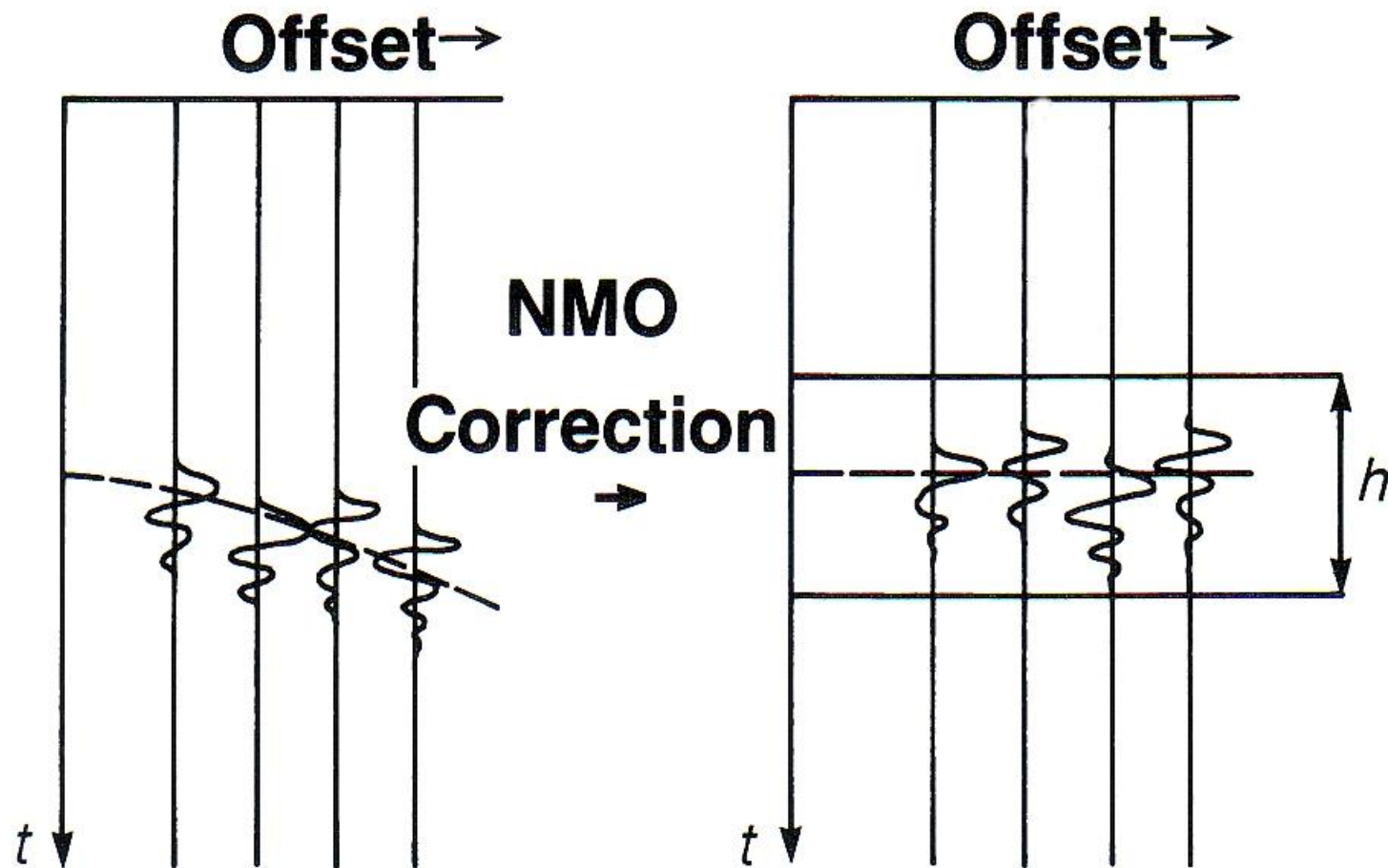
TOT_STAT = cumulative applied statics

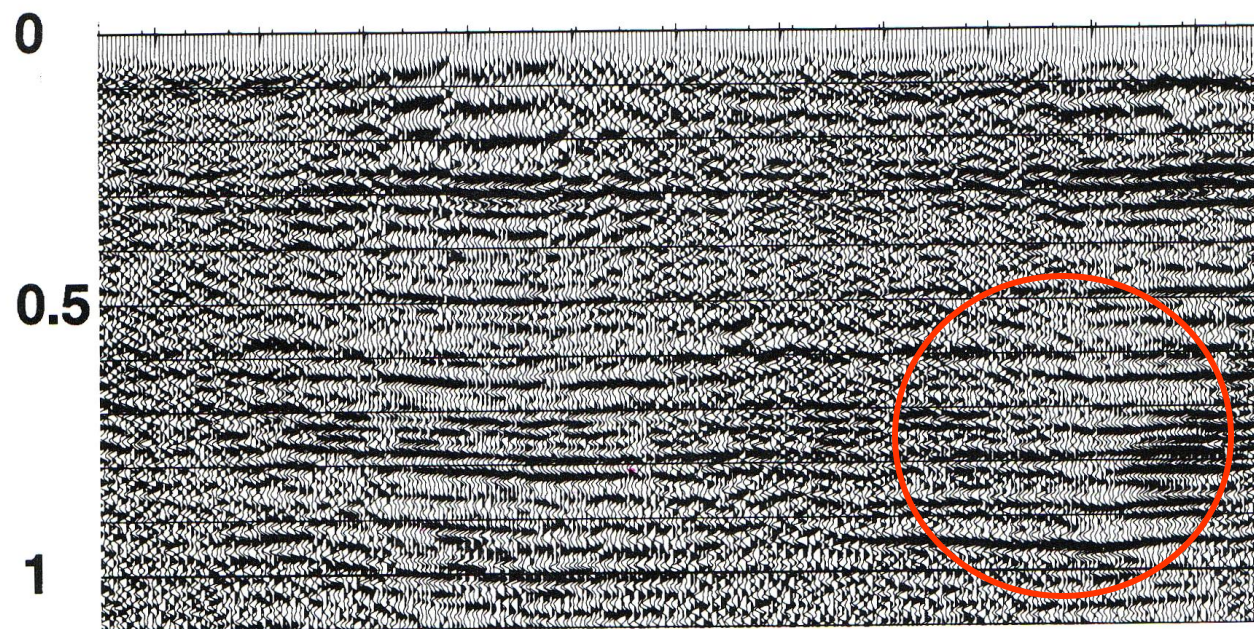
NA_STAT = statics less than one sample period which are not-yet-applied

For example, if TOT_STAT = 21.2 ms, and the sample period is 4

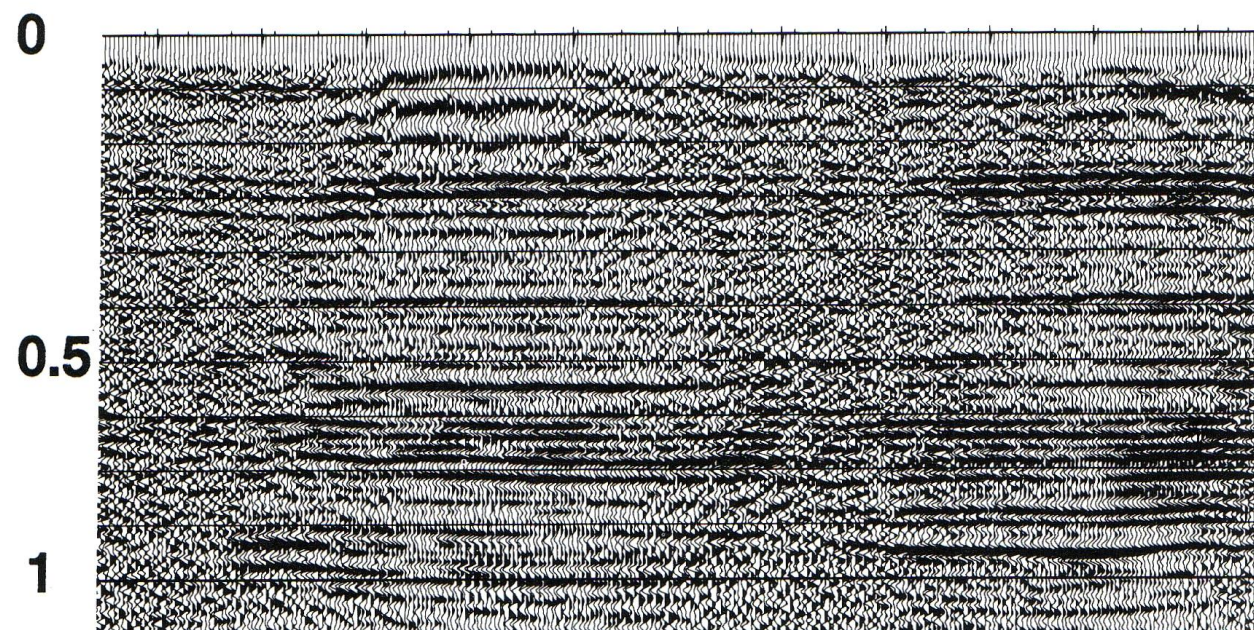
NA_STAT = 1.2 ms

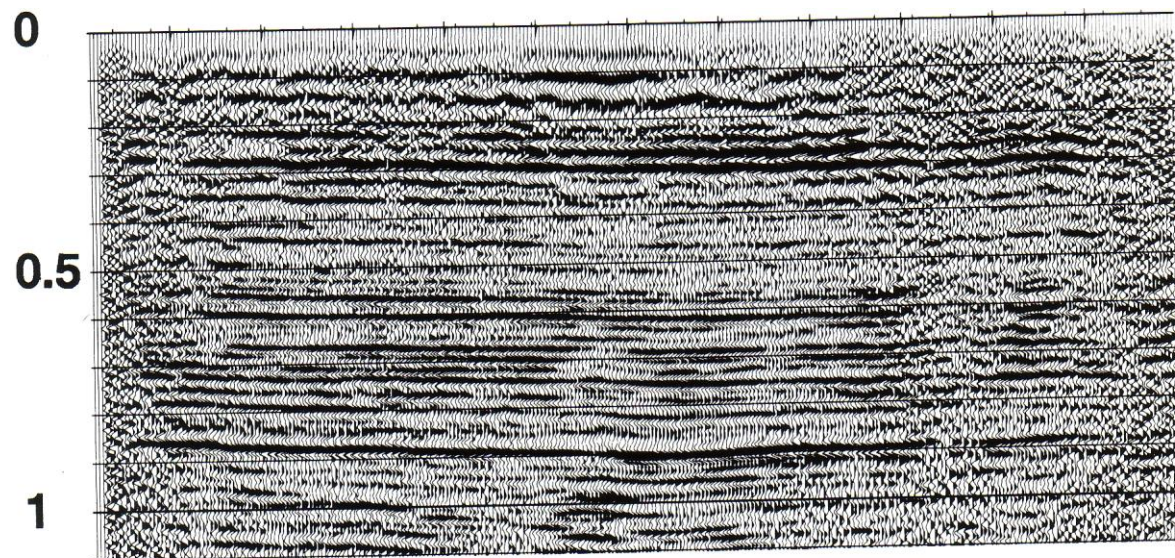






(a)





(a)

