

RESEARCH ARTICLE

Forensic document examination and algorithmic handwriting analysis of Judahite biblical period inscriptions reveal significant literacy level

Arie Shaus^{1,2,3}*, Yana Gerber⁴*, Shira Faigenbaum-Golovin¹*, Barak Sober^{5,6}*, Eli Piastetzky⁷, Israel Finkelstein²

1 Department of Applied Mathematics, Tel Aviv University, Tel Aviv, Israel, **2** Jacob M. Alkow Department of Archaeology and Ancient Near Eastern Civilizations, Tel Aviv University, Tel Aviv, Israel, **3** Department of Genetics, Harvard Medical School, Boston, MA, United States of America, **4** Division of Identification & Forensic Science, Retired Senior Questioned Document Examiner, Israel Police, Tel Aviv, Israel, **5** Department of Mathematics, Duke University, Durham, NC, United States of America, **6** Rhodes Information Initiative, Duke University, Durham, NC, United States of America, **7** School of Physics and Astronomy, Tel Aviv University, Tel Aviv, Israel

* These authors contributed equally to this work.

* ashaus@post.tau.ac.il (AS); gerberyana@gmail.com (YG); shirafaigen@gmail.com (SFG); barakino@math.duke.edu (BS)



OPEN ACCESS

Citation: Shaus A, Gerber Y, Faigenbaum-Golovin S, Sober B, Piastetzky E, Finkelstein I (2020) Forensic document examination and algorithmic handwriting analysis of Judahite biblical period inscriptions reveal significant literacy level. PLoS ONE 15(9): e0237962. <https://doi.org/10.1371/journal.pone.0237962>

Editor: William Schniedewind, University of California Los Angeles, UNITED STATES

Received: August 4, 2019

Accepted: August 7, 2020

Published: September 9, 2020

Copyright: © 2020 Shaus et al. This is an open access article distributed under the terms of the [Creative Commons Attribution License](https://creativecommons.org/licenses/by/4.0/), which permits unrestricted use, distribution, and reproduction in any medium, provided the original author and source are credited.

Data Availability Statement: All relevant data are within the manuscript, its Supporting Information files and a public repository. Arad Ancient Hebrew dataset is available on figshare (CC BY 4.0 license): <https://doi.org/10.6084/m9.figshare.11423181.v1> Modern Hebrew dataset is available on figshare (CC BY 4.0 license): <https://doi.org/10.6084/m9.figshare.11423352.v1>.

Funding: The research reported here received initial funding from European Research Council

Abstract

Arad is a well preserved desert fort on the southern frontier of the biblical kingdom of Judah. Excavation of the site yielded over 100 Hebrew ostraca (ink inscriptions on potsherds) dated to ca. 600 BCE, the eve of Nebuchadnezzar's destruction of Jerusalem. Due to the site's isolation, small size and texts that were written in a short time span, the Arad corpus holds important keys to understanding dissemination of literacy in Judah. Here we present the handwriting analysis of 18 Arad inscriptions, including more than 150 pair-wise assessments of writer's identity. The examination was performed by two new algorithmic handwriting analysis methods and independently by a professional forensic document examiner. To the best of our knowledge, no such large-scale pair-wise assessments of ancient documents by a forensic expert has previously been published. Comparison of forensic examination with algorithmic analysis is also unique. Our study demonstrates substantial agreement between the results of these independent methods of investigation. Remarkably, the forensic examination reveals a high probability of at least 12 writers within the analyzed corpus. This is a major increment over the previously published algorithmic estimations, which revealed 4–7 writers for the same assemblage. The high literacy rate detected within the small Arad stronghold, estimated (using broadly-accepted paleo-demographic coefficients) to have accommodated 20–30 soldiers, demonstrates widespread literacy in the late 7th century BCE Judahite military and administration apparatuses, with the ability to compose biblical texts during this period a possible by-product.

under the European Community's Seventh Framework Program (FP7/2007-2013)/ERC Grant Agreement 229418, and by ISF grant 2062/18. It was supported by generous donations from Jacques Chahine (made through the French Friends of Tel Aviv University) and the Dan David Foundation; all the above were awarded to IF. BS was supported through Math+X grant 400837 from the Simons Foundation, as well as by Duke University.

Competing interests: NO authors have competing interests

Introduction

The Hebrew inscriptions from the Arad fort [1], located in the arid southern frontier of biblical Judah (see Fig 1), is one of a few textual corpora from the First Temple period. Dated to ca. 600 BCE, the more than 100 ostraca (texts written in ink on clay potsherds) provide a record of distribution of provisions to military units shortly before the destruction of the Kingdom of Judah by the invading Babylonian army (examples of some Arad ostraca are shown in Fig 2; the ostraca numbers used throughout this work are according to [1]).

The texts include administrative records, such as lists of names, probably produced at the fort itself, as well as orders that were dispatched to Arad from higher echelons in the Judahite military system, as well as correspondence with neighboring forts. One of the inscriptions mentions “the King of Judah” and another “the house of YHWH,” probably referring to the Temple in Jerusalem. Some orders of provisions refer to the *Kittiyim*, seemingly a Greek mercenary unit/s [2], which assisted in protecting the Negev desert border from the neighboring Kingdom of Edom (see Fig 1). A vital part of the corpus, the so-called “Eliashib’s letters,” involving the fort quartermaster, probably encompasses the registration of about one month’s expenses [3]. This is true at least for texts 1, 2, 3, 5, 7, 8, 16, 17a, 17b and 18 analyzed herein. Since, arguably, some other ostraca mention the same individuals (e.g., a son of Eliashib is mentioned within a list of names in Ostrakon 38; Malkiyahu, probably the commander of the fortress, is mentioned in Ostraca 24 and 40), in our view, the same short life span is true for the majority of, or even the entire corpus. The texts provide invaluable information regarding daily life of the Judahite army personnel (e.g., [4,5]), and contribute to the research fields of history of Ancient Israel, Hebrew epigraphy and biblical exegesis.

In our previous studies [6–8] we touched upon the important topic of the literacy level in late-monarchic (7th century BCE) Judah, which has ramifications for the question of composition of biblical texts during this period [9]. Due to its remote location, small size (it accommodated only ca. 20–30 soldiers) and its rich collection of texts, probably written within a short period of time [3], Arad is an excellent testing ground for examining this issue [10].



Fig 1. Main towns in Judah and sites in the Beer Sheba valley ca. 600 BCE.

<https://doi.org/10.1371/journal.pone.0237962.g001>



Fig 2. Examples of two Hebrew ostraca from Arad. Left: Ostracon 40 (9.5x14.6 cm), right: Ostracon 3 (6.0x5.9 cm). The poor state of preservation, including stains, cracks and blurred text, is apparent. The clay sherds are significantly different in shape, size, type of clay, and in their handwriting. Image courtesy of Yana Gerber and the Israel Antiquities Authority.

<https://doi.org/10.1371/journal.pone.0237962.g002>

Our algorithmic studies aimed, therefore, at identifying the number of “hands” (distinct writers) in the Arad corpus [6–8]. These encompassed 16 Arad ostraca, but since two of them were double-sided, the number of texts analyzed was, in fact, 18. The same sample set is analyzed below (note that at the time the current study was conducted, we still did not know that yet another ostracon from this set was double-sided [4,5]). Our algorithmic investigations estimated a minimal number of 4, 5 or 7 writers at Arad [6–8], possibly hinting at the existence of a Judahite educational system that trained personnel for the Judahite administration, including the military (see examples of non-military writing in [11–14]).

Forensic handwriting examination of the Arad inscriptions has never before been conducted. In fact, to the best of our knowledge, such an examination has never been performed on any ancient inscription (though, see [15] for forensic chemical analysis in the context of historical texts). All the more so, the introduction of sophisticated computer-assisted forensic examination methods [16–19] (especially in the field of computerized signature forgery detection [20,21]) did not lead to combined forensic/algorithmic efforts related to historical texts.

A related, active domain of research is computerized writer identification (both modern and historical), which does not involve the expertise of professional forensic document examiners. Instead, within the context of historical texts, computerized writer identification relies on annotation of epigraphers or paleographers—specialists on ancient writing systems. Examples of such studies cover topics as diverse as ancient Greek inscriptions [22]; Byzantine and Spanish Medieval codices [23,24]; Herman Melville’s alleged 19th c. texts [25]; 13th–20th c. Arabic and Turkish manuscripts [26–28]; as well as Hebrew Second Temple [29] and Medieval [30,31] documents. This means that an often subjective opinion of “manuscript historians”

(borrowing a term from [25]) is preferred over advice from professional forensic writing experts. For an in-depth analysis and comparison of the two differing methodologies see [32].

A review of [22–31] and other computerized writer identification surveys [33,34] reveals another potential problem. Commonly, the employed algorithms utilize computer vision and machine learning features and procedures to produce abstract “distances” between inscriptions—e.g., based on the slant of their characters, their relative proportions, their uniformity, etc. Such an approach only allows identifying “close” texts; it does not evaluate the quality of the match statistically. For example, if a distance between texts *A* and *B* is, say, 3.14, the chances of the writers being identical could be 1%, 10%, or 99%. The distance in itself does not convey any probabilistic information, and is insufficient for identicalness/distinctiveness ruling.

It is thus not surprising that the performance tests of such writer identification algorithms are often weak, and they are typically applied in tightly engineered environments. A “ground truth,” i.e., a collection of texts with pre-established writers, is required. The testing is not performed by comparing all possible pairs of documents within the collection. Instead, for each given document *X*, *k* “closest” inscriptions are selected, and a “success” is marked if *one* of their writers is the same as in *X*. Such distance-measuring or testing procedures are entirely irrelevant outside of a ground-truth framework. It is certainly insufficient for the task of analyzing afresh a corpus of many inscriptions with unknown writers’ identities.

Alternative algorithmic frameworks, obtaining significance levels (p-value) for writer’s identicalness of two given inscriptions, have recently been proposed [6–8]. These techniques do not require ground truth, even when operating on an entirely new, possibly ancient, collection of texts. The algorithmic methods elaborated upon in the current paper are major developments of some of these schemes [6,7].

The main contributions of this article are:

- A first of its kind detailed forensic handwriting examination of ancient inscriptions, performed on the Arad corpus.
- Two enhanced writer identification algorithms, also tested on the Arad ostraca.
- A systematic comparison between the forensic and the algorithmic results.
- Progress on the question of number of writers at Arad, with the ability to compose/copy biblical-genre texts in Judah during this period a possible by-product.

Materials and methods

Herein we provide a brief description of the datasets, the workflow of the document examiner and the two algorithms employed. Additional details are provided in the [S1 File](#). Throughout the article, by “character” we denote a particular instance of a given letter (e.g., there may be many characters, which are all occurrences of the letter *alep*).

Datasets

The study was conducted on two datasets of written material. The main assemblage was a corpus of 16 Hebrew ostraca found at Arad. The inscriptions were composed during the span of a few years, ca. 600 BCE, and consist mainly of military correspondence [1]. The computerized research was performed on digital images of these inscriptions. The texts under examination were Arad Ostraca 1, 2, 3, 5, 7, 8, 16, 17, 18, 21, 24, 31, 38, 39, 40 and 111, chosen because of their relative clarity and potential for character reconstruction. Ostraca 17 and 39 contain substantial writing on both sides of the potsherd and were treated as separate texts (17a and 17b;

Table 1. Arad Hebrew ostraca details.

Ostraca No.	Israel Antiquities Authority registration No.	Current Location	Length (cm)	Width (cm)	Notes
1	1967–713	The Israel Museum, Jerusalem	8.3	5.1	
2	1967–625	The Israel Museum, Jerusalem	9.9	7.5	
3	1967–623	The Israel Museum, Jerusalem	6.0	5.9	
5	1967–627	The Israel Museum, Jerusalem	5.2	2.7	
7	1972–165	The Israel Museum, Jerusalem	7.8	5.0	
8	1967–1893	Israel Antiquities Authority, Beit Shemesh storage facility	5.6	6.6	
16	1967–990	The Israel Museum, Jerusalem	9.0	6.4	Only the <i>recto</i> was analyzed
17	1967–624	The Israel Museum, Jerusalem	8.4	6.0	<i>Recto</i> and <i>verso</i> were analyzed separately
18	1967–669	The Israel Museum, Jerusalem	6.6	4.2	
21	1972–126	Eretz Israel Museum, Tel Aviv	11.5	12.0	
24	1972–121	The Israel Museum, Jerusalem	10.5	10.0	
31	1967–1223	On loan	16.0	16.0	
38	1967–1878	Israel Antiquities Authority, Beit Shemesh storage facility	4.5	4.4	
39	1967–992	The Israel Museum, Jerusalem	5.6	5.9	<i>Recto</i> and <i>verso</i> were analyzed separately
40	1967–631	The Israel Museum, Jerusalem	14.6	9.5	
111	1967–2263	Israel Antiquities Authority, Beit Shemesh storage facility	9.3	5.4	

<https://doi.org/10.1371/journal.pone.0237962.t001>

39a and 39b), resulting in 18 texts under examination. During the time when the research was conducted, we had not yet obtained the data from the newly discovered (via multispectral imaging) *verso* side of Arad Ostrakon 16 [4,5]; thus, we have used only its *recto* in the current examination. For the forensic handwriting analysis, either the ostraca themselves, or their high quality regular or multispectral images [4,5,35–37] were used; other promising techniques of image acquisition [38,39] were less fruitful. For the algorithmic analysis, a semi-automatic reconstruction of the most prominent characters was utilized [40]; it can be downloaded at [41].

Permits for imaging, research and publication of the Arad ostraca were obtained from the Israel Antiquities Authority; see Table 1 for ostraca details. All necessary permits were obtained for the described study, which complied with all relevant regulations.

The second dataset, used to validate the two algorithms, contained handwriting samples collected from 18 present-day writers of modern Hebrew. This dataset allowed us to estimate the False Positive and False Negative rates for the algorithmic methods that we employed; it can be downloaded at [42]. It will be stressed that the modern Hebrew dataset was not used to train or calibrate the algorithm for its activation on the first, ancient Hebrew dataset (or vice versa). The purposes of the modern Hebrew dataset were algorithm verification and sanity check.

For additional details regarding the datasets, see S1 File, Section 1.

Forensic handwriting examination workflow

Modern forensic handwriting examination relies on the fact that the task of writing requires the individual to combine sensory-motor skills with certain personal inclinations. Thus, it can serve as a unique identifier for the person performing the act of writing (i.e., a biometric

“fingerprint”) [43]. Forensic handwriting analysis aims at tracking features corresponding to specific individuals, and utilizing them to decide whether the observed documents were written by a single hand or by different writers [44–49]. The procedure detailed below follows the protocol of modern forensic handwriting examination, adapted to ancient ostraca, utilizing many common characteristics of ancient and modern Hebrew writing (e.g., basically the same language; same alphabet; mostly separated characters; etc.)

The examination process is divided into three steps: *analysis*, *comparison*, and *evaluation*. The *analysis* phase includes a detailed examination of every single inscription and, if necessary, its high quality regular or multispectral images [4,5,35–37], according to the following features (for an example, see Fig 3):

- **General appearance of the sherd:** size, form and type of pottery.
- **Writing style:** legibility, writing skill and flow, and line quality.
- **Arrangement and use of space:** margins, spacing, alignment and formatting.
- **Size and proportions:** absolute and relative size of the writing and letters, alterations of size or height of upstrokes and downstrokes.
- **Slant:** general slant of the writing as well as an absolute and relative slant of letters.
- **Punctuation:** presence, form and position relative to the imaginary baseline of punctuation marks (or upper line in the case of Hebrew script).
- **Spacing:** spacing between letters, strokes, words and lines; relative position of letters vis-à-vis the preceding and following ones.
- **Alignment:** alignment of words and letters relative to an imaginary baseline.
- **Letter shapes and range of their variations within a script:** extraction of distinctive features.

The next phase of the examination process is *comparison* of writing features in different ostraca based on the aforementioned analysis. Consistent patterns and repetitions, characteristic to various inscriptions, are identified. Finally, an *evaluation* of identicalness or distinctiveness of various writers is made, using the scales of conclusions common in the forensic handwriting analysis. The grades range from the definite conclusion of identity to the definite elimination of identity [50,51]. Inconclusive grade is used when there are significant limiting factors in the investigated or in known handwriting, and the examiner does not lean in one direction or another.

For additional details regarding the forensic handwriting analysis procedure, see [S1 File](#), Section 2.

Algorithm #1: Writers' identification via a combination of features

The algorithm aims at differentiating between writers of a given set of texts. The method described below is an improvement and enhancement of an algorithm previously published in

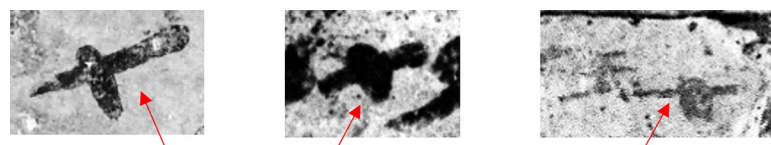


Fig 3. Examples of different shapes, slants, relative length, width and intersection points of the horizontal and vertical shaft of the letter *tav*. Left: Ostrakon 7, middle: Ostrakon 1, right: Ostrakon 24.

<https://doi.org/10.1371/journal.pone.0237962.g003>

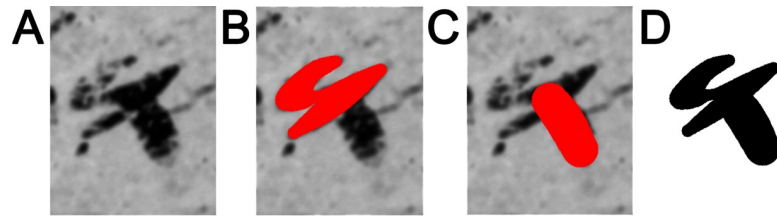


Fig 4. Restoration of a character *waw* in Arad Ostracon 24. (A) The original image. (B and C) reconstructed strokes. (D) The resulting character restoration. Images are courtesy of the Institute of Archaeology, Tel Aviv University and the Israel Antiquities Authority.

<https://doi.org/10.1371/journal.pone.0237962.g004>

[6]. The main alterations are: replacement of k-mean clustering with k-medoid clustering; improved representation of non-homogeneity of the characters; updated and more accurate p-value calculation; lowering the p-value threshold to 0.1 for significance-enhancing purposes (for further details, see [S1 File](#), Section 3).

In the first step, a digital image of each inscription is segmented into characters, which are restored via a semi-automatic reconstruction procedure. The method is based on the representation of a given character as a union of individual strokes that are treated independently and later recombined. The stroke restoration imitates a reed/pen movement, optimizing the pen's trajectory through manually sampled key-points. The restoration minimizes an energy functional, taking into account the adherence to the original image, the smoothness of the stroke, as well as certain properties of the reed radius. The minimization problem is solved by performing Gradient Descent iterations on a Cubic-Spline representation of the stroke. The end product of the reconstruction is a binary (black and white) image of each character, incorporating all its strokes; see [40] for additional details and [Fig 4](#) for an example.

The second stage of the algorithm letter comparison relies on features extracted from the characters' binary images, utilized in order to compare characters from different texts. The features in use are: SIFT [52], Zernike [53,54], DCT, kd-tree [55,56], image projections [57], L_1 and CMI [58–60]. Additionally, for each feature, a respective distance is defined. Later on, all these distances are combined into a single, generalized feature vector. This vector describes each character by the degree of its proximity to all the characters, using all the features. Finally, a distance between any two characters is calculated according to the Euclidean distance between their generalized feature vectors.

The final, third stage of the algorithm addresses the question, “What is the probability that two given texts were written by the same writer?” The answer is achieved by posing an alternative null hypothesis H_0 (“both texts were written by the same writer”) and attempting to reject it via an experiment. If the experiment's outcome is unlikely ($P \leq 0.1$), we reject the H_0 and conclude that the inscriptions were written by different individuals. Alternatively, if the H_0 is probable ($P > 0.1$), we remain agnostic. The experiment testing the H_0 clusters a collection of characters of the same letter (e.g., *alep*) from two given inscriptions. Typically, if two different writers composed the documents, the clustering results would resemble the original inscriptions (i.e., most of the characters from the first inscription would be assigned to one cluster, while most of the characters from the second inscription would be assigned to another). Alternatively, if the documents were written by a single writer, we would expect the clustering results to be random. Moreover, if several different letters (e.g., *alep*, *he*, *waw*, etc.) are present, additional statistical significance would be gained by conducting independent experiments and combining the p-values via Fisher's method [61]. The outcome represents the probability that H_0 is true based on all the evidence at our disposal.

For additional details regarding the algorithm, see [S1 File](#), Section 3.

Algorithm #2: Writers' identification via binary pixel patterns

This algorithm also aims at differentiating between writers in a given set of texts. The method is a major improvement of an algorithm previously published in [7]. The main alterations are a complete replacement of the p-values combination framework in order to account for dependencies between various features and letters, as well as a more aggressive filtering of the incoming input in order to prevent spurious results (for further details, see S1 File, Section 4).

The algorithm uses the same preliminary characters' reconstruction procedure as Algorithm #1. Then, each individual binarized and segmented character is represented as a histogram of 512 overlapping black and white patches of 3x3 pixels, which will be denoted henceforth as *binary pixel patterns* [62,63]. In the process of comparing two given inscriptions under a "single writer" H₀ hypothesis, we obtain a P via comparing the empirical distributions of occurrences of each patch for each letter under consideration. This is performed through Welch's generalization [64] of a classic Student's t-test [65]. The potentially hundreds of resulting P's (for each binary pattern and each letter type) are combined using a dependency-correcting approach of Brown [66], including a computational improvement by Kost and McDermott [67]—producing a single P. The outcome represents the probability that a "single writer" hypothesis is true based on all the evidence at our disposal.

For additional details regarding the algorithm, see S1 File, Section 4.

Results

The independent outcomes of the three lines of investigation are presented in Fig 5; for more in-depth results, see S1 File, Sections 2–4. It should be stressed that by design, while the algorithmic methods are capable of distinguishing between *different* writers or otherwise remain indecisive, only the forensic expert is able to mark pairs of texts as written by the *same* writer.

The most important observation that can be construed from Fig 5 is that **according to the forensic analysis, the number of independent writers within the Arad corpus is at least 12 (!)**. Indeed, it can be easily seen from Fig 5 that Texts 5, 8, 17a, 21, 24, 31, 40, 111 were all

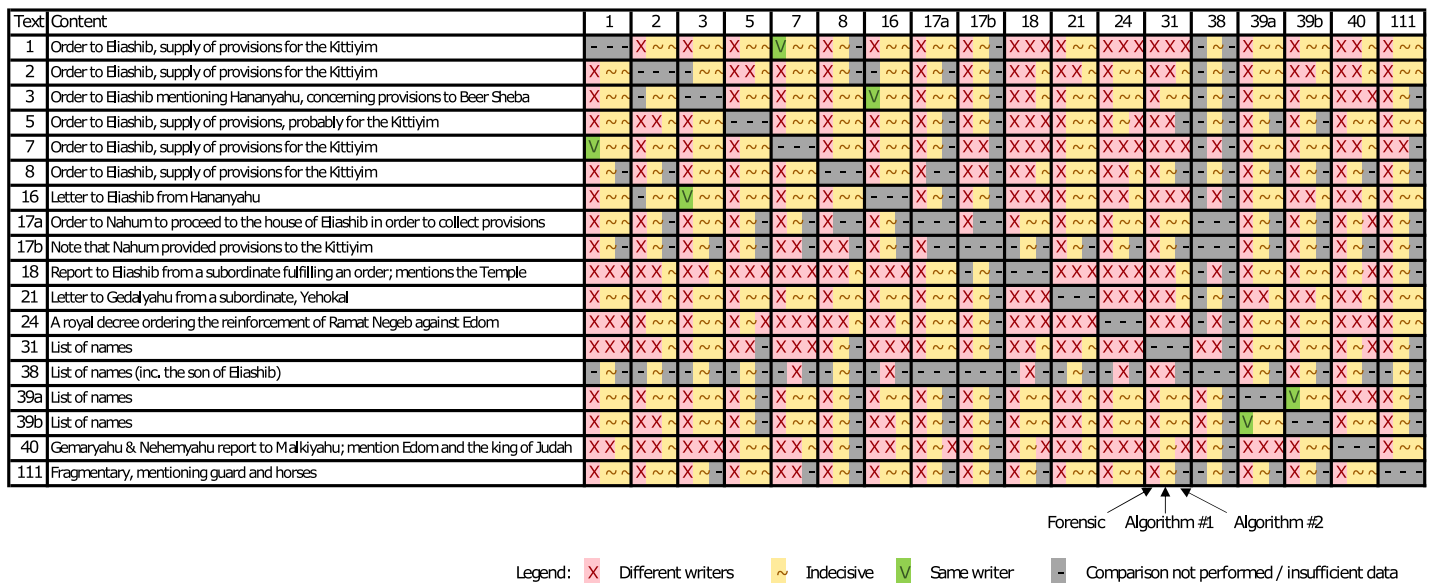


Fig 5. Comparison between different Arad ostraca via forensic and two algorithmic investigations. Three respective results are provided in each intersection in the table.

<https://doi.org/10.1371/journal.pone.0237962.g005>

created by different writers. Moreover, this property is maintained by adding either Text 1 or Text 7. Continuing this procedure, the same holds true when adding either 2, 3 or 16, as well as either 17b or 18, and either 39a or 39b. All in all, 24 sets of 12 inscriptions written by 12 different writers can be obtained in this fashion (e.g., 5, 8, 17a, 21, 24, 31, 40, 111, 1, 3, 18, 39a; OR 5, 8, 17a, 21, 24, 31, 40, 111, 7, 16, 18, 39b; etc.). The corresponding figures for the more “cautious” and thus less informative Algorithms #1 and #2 are a minimal number of 5 or 3 writers, not taking into account any information in the texts of the ostraca.

Another important remark is that **the forensic and the two algorithmic investigations exhibit no contradictions in their conclusions**. There are three cases where an *identicalness* of writers was established by the forensic expert; in all these cases the two algorithms remained agnostic.

Additional observations:

- The forensic handwriting analysis suggests a strong possibility that the two sides of Ostrakon 39, listing names of individuals, were written by the same writer. On the other hand, Ostraca 31, 38 and 39—all listing names and thus most probably composed at Arad—were all written by different writers (this evidence is also supported by Algorithm #1, separating 31 from 38). Thus, we obtain **at least three different writers at Arad**.
- The forensic analysis demonstrates a strong possibility that Ostraca 1 and 7 were composed by the same writer. This writer is one of the military officials requesting supplies for the *Kittiyim* mercenaries, possibly their direct Judahite commander (as will be assumed below), or liaison officer. On the other hand, it seems that among Ostraca 1, 2, 5, 7 and 8 (dealing with supplies to the *Kittiyim*), all texts except 1 and 7 were written by different hands (2 and 5 were also “separated” by Algorithm #1). Thus, **it is conceivable that leading the *Kittiyim* into desert reconnaissance missions was the responsibility of at least four literate Judahite military officers**.
- Finally, according to the forensic analysis, Ostraca 3 and 16 were probably composed by the same writer. Both of these inscriptions mention Hananyahu, possibly a quartermaster at Beer Sheba, ca. 25 km to the west of Arad, and were apparently written by him. Interestingly, both texts are two-sided, with the *verso* of Ostrakon 3 containing only a few discernable characters [1], while the recently discovered *verso* of Ostrakon 16 contains at least three lines of text [4,5].

Discussion

The foremost methodological achievement of this paper is the thorough comparison of human vs. algorithmic analyses of ancient handwriting. The expertise of the forensic examiner produced significantly more “hands” separations compared to computational methods. Additionally, unlike the algorithmic techniques, human analysis allows for a detection of identicalness between writers. On the other hand, each result produced by the reported algorithms is accompanied by an easily interpretable statistical significance. Such a detail is inherently missing in the work of the forensic examiner, who relies on general assessments.

The notable result of **12 different “hands” out of 18 examined texts within the Arad corpus** (according to the forensic document examination), illuminates the issue of literacy in Judah at the end of the First Temple period. Even if some of the texts may have been sent to Arad from other locations in the region or farther away, there are still **at least 3 writers among the 20–30 military personnel stationed at this small fortress**. Additionally, a **minimum of 4 writers is observed among commanders of the *Kittiyim* unit/s**. A proposed

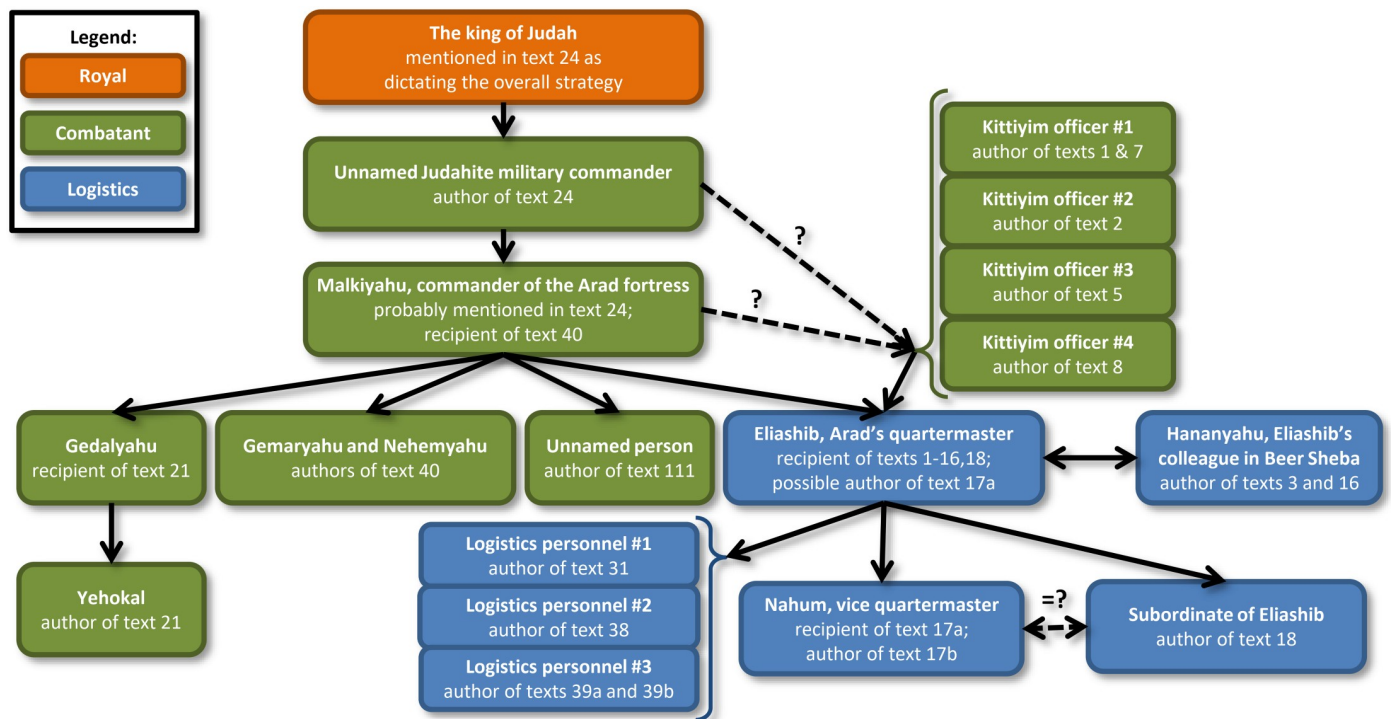


Fig 6. Possible reconstruction of relations between Arad inscriptions and different writers according to the forensic analysis. Differentiation between combatant and logistics officials is also indicated.

<https://doi.org/10.1371/journal.pone.0237962.g006>

reconstruction of the chain of command within the Judahite army (based on the information above, as well as on [1,6]; also see [2–5]), with written documents flowing from the king of Judah down to the vice quartermaster of the Arad fortress, is presented in Fig 6.

For broader significance, this textual evidence should be considered together with ostraca unearthed at other outposts in the southern periphery of Judah. We refer mainly to Horvat 'Uza [68] (where 34 inscriptions were discovered, including a wisdom composition probably composed by a local scribe and reflecting a high degree of literacy [69]), Horvat Radum [68], Tel Malhata [70], Beer Sheba [71], Tel 'Ira [72,73], Aroer [74], Tel Masos [75] and Kadesh Barnea [76]. The wealth of texts from the Negev (preserved because of dry weather conditions) can be supplemented by the military correspondence within the rich corpus from Lachish in the Shephelah [77] (the officer writing Lachish Ostrakon 3 is seemingly offended by the suggestion that he is assisted by a scribe!), as well as by religious/cultic [12] and administrative [11,13,14] texts from other Judahite sites.

Widespread writing within the military, religious and civil bureaucracies hint at the **existence of an appropriate educational system in Judah at the end of the First Temple period** [10,78–82]. The unprecedented scribal activity during this era (cf. [83]) provides a **suitable literacy level and historical context for the composition and dissemination (including appreciation among the population) of several fundamental Judahite biblical texts**. We refer mainly to the Book of Deuteronomy and to the first version of the consolidated narrative presented in the Books of Joshua, Judges, Samuel and Kings—the so-called Deuteronomistic History [84,85]. These writings served as the law and "historical" platforms aimed at advancing the Judahite ideology and theology [85] at the end of 7th–beginning of the 6th centuries BCE. Judging from archaeological data, the destruction of Jerusalem by Nebuchadnezzar in 586 BCE

brought about decline if not cessation of this significant Hebrew literary activity in the southern highlands for the next four centuries [86].

Supporting information

S1 File. Supplementary material.
(PDF)

Acknowledgments

This research was made possible by the dedicated reconstruction work of Ma'ayan Mor, as well as thanks to the invaluable cooperation of Eran Arie, Curator of Iron Age and Persian Period Archaeology, the Israel Museum, Jerusalem, Yael Barschak, Head of the Photographic Archives and Debora Ben-Ami, Curator of the Iron Age and Persian Periods, both from the Israel Antiquities Authority. The kind assistance of Avi Abulafia, Sivan Einhorn, Noa Evron, Alexander Gerber, Yana Kirilov, Eythan Levy, Anat Mendel-Geberovich, Myrna Pollak and Christopher A. Rollston is greatly appreciated. We also thank the PLOS ONE editor and the anonymous reviewers for their helpful comments and suggestions. Ostrakon images are courtesy of the Institute of Archaeology, Tel Aviv University; Yana Gerber; and of the Israel Antiquities Authority.

Author Contributions

Conceptualization: Arie Shaus, Yana Gerber, Shira Faigenbaum-Golovin, Barak Sober, Eli Piasezky, Israel Finkelstein.

Data curation: Arie Shaus, Yana Gerber, Shira Faigenbaum-Golovin, Barak Sober.

Formal analysis: Arie Shaus, Yana Gerber, Shira Faigenbaum-Golovin, Barak Sober.

Funding acquisition: Eli Piasezky, Israel Finkelstein.

Investigation: Arie Shaus, Yana Gerber, Shira Faigenbaum-Golovin, Barak Sober.

Methodology: Arie Shaus, Yana Gerber, Shira Faigenbaum-Golovin, Barak Sober.

Resources: Eli Piasezky, Israel Finkelstein.

Software: Arie Shaus, Shira Faigenbaum-Golovin, Barak Sober.

Supervision: Eli Piasezky, Israel Finkelstein.

Visualization: Arie Shaus, Yana Gerber.

Writing – original draft: Arie Shaus, Yana Gerber, Shira Faigenbaum-Golovin, Barak Sober.

Writing – review & editing: Arie Shaus, Yana Gerber, Shira Faigenbaum-Golovin, Barak Sober, Eli Piasezky, Israel Finkelstein.

References

1. Aharoni Y. Arad Inscriptions. Jerusalem: Israel Exploration Society; 1981 [1975, Hebrew].
2. Na'aman N. Textual and historical notes on the Eliashib archive from Arad. *Tel Aviv*. 2011; 38. 1: 83–93.
3. Lemaire A. *Inscriptions hébraïques, tome I: Les ostraca*. Paris: Les éditions du Cerf. 1977. pp 230–231.
4. Faigenbaum-Golovin S, Mendel-Geberovich A, Shaus A, Sober B, Cordonsky M, Levin D, et al. Multi-spectral imaging reveals biblical-period inscription unnoticed for half a century. *PLOS ONE*. 2017; 12.6: e0178400. <https://doi.org/10.1371/journal.pone.0178400>

5. Mendel-Geberovich A, Shaus A, Faigenbaum-Golovin S, Sober B, Cordonsky M, Piasetzky E, et al. A brand new old inscription: Arad ostrakon 16 rediscovered via multispectral imaging. *Bull Am Schools Orient Res.* 2017; 378: 113–125. <https://doi.org/10.5615/bullamerschoorie.378.0113>
6. Faigenbaum-Golovin S, Shaus A, Sober B, Levin D, Na'aman N, Sass B, et al. Algorithmic handwriting analysis of Judah's military correspondence sheds light on composition of biblical texts. *Proc Natl Acad Sci U S A.* 2016; 113.17: 4664–4669. <https://doi.org/10.1073/pnas.1522200113>
7. Shaus A, Turkel E. Writer identification in modern and historical documents via binary pixel patterns, Kolmogorov-Smirnov test and Fisher's method. *J Imaging Sci Technol.* 2017; 61.1: 010404–1–010404–9. <https://doi.org/10.2352/J.ImagingSci.Technol.2017.61.1.010404>
8. Faigenbaum-Golovin S, Levin D, Piasetzky E, Finkelstein I. Writer characterization and identification in short modern and historical documents: Reconsidering paleographic tables. *Proceedings of the 19th ACM Symposium on Document Engineering (DocEng2019)*, 23:1–23:4.
9. Schmid K. *The Old Testament: A Literary History.* Minneapolis: Fortress; 2012.
10. Rollston CA. *Writing and Literacy in the World of Ancient Israel: Epigraphic Evidence from the Iron Age.* Atlanta: Society of Biblical Literature; 2010.
11. Naveh JA. Hebrew letter from the seventh century B.C. *Israel Exploration Journal.* 1960; 10. 3: 129–139.
12. Barkay G, Vaughn AG, Lundberg MJ, Zuckerman B. The amulets from Ketef Hinnom: A new edition and evaluation. *Bull Am Schools Orient Res.* 2004; 334: 41–71.
13. Faigenbaum-Golovin S, Rollston CA, Piasetzky E, Sober B, Finkelstein I. The Ophel (Jerusalem) ostrakon in light of new multispectral images. *Semitica.* 2015; 57: 113–137. <https://doi.org/10.2143/SE.57.0.3115458>
14. Mendel-Geberovich A, Faigenbaum-Golovin S, Shaus A, Sober B, Cordonsky M, Piasetzky E, et al. A renewed reading of Hebrew ostraca from cave A-2 at Ramat Beit Shemesh (Nahal Yarmut), based on multispectral imaging. *Vetus Testamentum.* 2019; 69: 682–701. <https://doi.org/10.1163/15685330-00001370>
15. Pessanha S, Manso M, Guilherme A, Costa M, Carvalho ML. Investigation of historical documents for forensic purposes by x-ray fluorescence spectrometry. *Surf. Interface Anal.* 2010; 42: 419–422.
16. Srihari SN, Cha S-H, Arora H, Lee S. Individuality of handwriting. *J. Forensic Sci.* 2002; 47: 1–17.
17. Srihari SN, Shi Z. Forensic handwritten document retrieval system. *Proceedings of the First International Workshop on Document Image Analysis for Libraries.* 2004: 1–7.
18. Srihari S. Handwriting Recognition, Automatic. In: Brown K, editor. *Encyclopedia of Language and Linguistics*, 2nd edition, vol. 5; 2006. pp. 203–211.
19. Srihari S, Huang C, Srinivasan H. On the discriminability of the handwriting of twins. *J. Forensic Sci.* 2008; 53. 2: 430–446. <https://doi.org/10.1111/j.1556-4029.2008.00682.x> PMID: 18366576
20. Birajdar GK, Mankar VH. Digital image forgery detection using passive techniques: A survey. *Digital Investigation.* 2013; 10. 3: 226–245.
21. Warif NBA, Wahab AWA, Idris MYI, Ramli R, Salleh R, Shamshirband S, et al. Copy-move forgery detection: survey, challenges and future directions. *Journal of Network and Computer Applications.* 2016; 75: 259–278.
22. Panagopoulos M, Papaodysseus C, Rousopoulos P, Dafi D, Tracy S. Automatic writer identification of ancient Greek inscriptions. *IEEE Trans Pattern Anal Mach Intell.* 2009; 31.8: 1404–1414.
23. Papaodysseus C, Rousopoulos P, Giannopoulos F, Zannos S, Arabadjis D, Panagopoulos M, et al. Identifying the writer of ancient inscriptions and byzantine codices. A novel approach. *Comput Vis Image Underst.* 2014; 121: 57–73.
24. De Stefano C, Maniaci M, Fontanella F, di Freca AS. Reliable writer identification in medieval manuscripts through page layout features: The “Avila” Bible case. *Eng Appl Artif Intell.* 2018; 72: 99–110.
25. Ball GR, Srihari SN, Stritmatter R. Writer verification of historical documents among cohort writers. *Proceedings of the 12th International Conference on Frontiers in Handwriting Recognition Frontiers in Handwriting Recognition (ICFHR 2010)*; 314–319.
26. Fecker D, Asi A, Pantke W, Märgner V, El-Sana J, Fingscheidt T. Document writer analysis with rejection for historic Arabic manuscripts. *Proceedings of the 14th International Conference on Frontiers in Handwriting Recognition (ICFHR 2014)*; 743–748.
27. Fecker D, Asi A, Märgner V, El-Sana J, Fingscheidt T. Writer identification for historical Arabic documents. *Proceedings of the 22nd International Conference on Pattern Recognition (ICPR 2014)*; 3050–3055.
28. Asi A, Abdalhaleem A, Fecker D, Märgner V, El-Sana J. On writer identification for Arabic historical manuscripts. *Int J Doc Anal Recognit.* 2017; 20. 3: 173–187.

29. Dhali MA, He S, Popović M, Tigchelaar E, Schomaker L. A digital palaeographic approach towards writer identification in the Dead Sea scrolls. *Proceedings of the 6th International Conference on Pattern Recognition Applications and Methods (ICPRAM 2017)*; 693–702.
30. Bar-Yosef I, Beckman I, Kedem K, Dinstein I. Binarization, character extraction, and writer identification of historical Hebrew calligraphy documents. *Int J Doc Anal Recognit.* 2017; 9.2: 89–99.
31. Wolf L, Littman R, Mayer N, German T, Dershowitz N, Shweka R, et al. Identifying Join Candidates in the Cairo Genizah. *Int J Comput Vis.* 2011; 94.1: 118–135.
32. Davis T. The practice of handwriting identification. *The Library: The Transactions of the Bibliographical Society* 2007, 8.3: 251–276.
33. Schomaker LRB. Writer identification and verification. In: Ratha N., Govindaraju V., editors. *Advances in Biometrics: Sensors, Systems and Algorithms.* London: Springer-Verlag; 2007. pp. 247–264.
34. Sreeraj M, Idicula SM. A survey on writer identification schemes. *Int J Comput Appl.* 2011; 26. 2: 23–33.
35. Faigenbaum S, Sober B, Shaus A, Moinester M, Piasezky E, Bearman G, et al. Multispectral images of ostraca: Acquisition and analysis. *J Archaeol Sci.* 2012; 39.12: 3581–3590. <https://doi.org/10.1016/j.jas.2012.06.013>
36. Sober B, Faigenbaum S, Beit-Arieh I, Finkelstein I, Moinester M, Piasezky E, et al. Multispectral imaging as a tool for enhancing the reading of ostraca. *Palest Explor Q.* 2014; 146.3: 185–197. <https://doi.org/10.1179/0031032814Z.000000000101>
37. Faigenbaum S, Sober B, Finkelstein I, Moinester M, Piasezky E, Shaus A, et al. Multispectral imaging of two Hieratic inscriptions from Qubur el-Walaydah. *Egypt and the Levant* 2014; 24: 349–353. <https://doi.org/10.1553/s349>
38. Nir-El Y, Goren Y, Piasezky E, Moinester M, Sober B. X-ray fluorescence (XRF) measurements of red ink on a Tel Malhata ostrakon. In: Beit-Arieh I, Freud L, editors. *Tel Malhata: A Central City in the Biblical Negev (Tel Aviv University Monograph Series 32).* Tel Aviv University; 2015; pp. 510–513.
39. Shaus A, Sober B, Tzang O, Ioffe Z, Cheshnovsky O, Finkelstein I, et al. Raman binary mapping of Iron Age ostrakon in unknown material composition and high fluorescence setting—A proof of concept. *Archaeometry.* 2019; 61.2: 459–469. <https://doi.org/10.1111/arc.12419>
40. Sober B, Levin D. Computer aided restoration of handwritten character strokes. *Comput Aided Des.* 2017; 89: 12–24.
41. Arad Ancient Hebrew dataset, figshare (CC BY 4.0 license): <https://doi.org/10.6084/m9.figshare.11423181.v1>
42. Modern Hebrew dataset, figshare (CC BY 4.0 license): <https://doi.org/10.6084/m9.figshare.11423352.v1>
43. Morris RN. *Forensic Handwriting Identification: Fundamental Concepts and Principles.* London and San Diego: Academic Press; 2000.
44. Osborn AS. *Questioned Documents.* Albany: Boyd Printing Company; 1929.
45. Conway JVP. *Evidential Documents.* Springfield: Thomas; 1959.
46. Harrison WR. *Suspect Documents: Their Scientific Examination.* New York: Praeger; 1958.
47. Hilton O. *Scientific Examination of Questioned Documents,* New York: Elsevier; 1982.
48. Huber RA, Headrick AM. *Handwriting Identification Facts and Fundamentals.* Boca Raton: CRC Press; 1999.
49. ASTM E2290-07a, Standard Guide for Examination of Handwritten Items (Withdrawn 2016). West Conshohocken, PA: ASTM International; 2007. Available from: www.astm.org.
50. McAlexander TV, Beck J, Dick R. The Standardization of Handwriting Opinion Terminology (ASTM Standard E1658). *J Forensic Sci.* 1991; 36.2: 311–319.
51. ASTM E1658-08, Standard Terminology for Expressing Conclusions of Forensic Document Examiners (Withdrawn 2017), West Conshohocken, PA: ASTM International; 2008. Available from: www.astm.org
52. Lowe DG. Distinctive image features from scale-invariant keypoints. *Int J Comput Vis.* 2004; 60: 91–110.
53. Tahmasbi A, Saki F, Shokouhi SB. Classification of benign and malignant masses based on Zernike moments. *Comput Biol Med.* 2011; 41: 726–735. <https://doi.org/10.1016/j.compbiomed.2011.06.009> PMID: 21722886
54. Tahmasbi A. Zernike moments. 2012. Available from: www.mathworks.com/matlabcentral/fileexchange/38900-zernike-moments

55. Sexton A, Todman A, Woodward K. Font recognition using shape-based quadtree and kd-tree decomposition. *Proceedings of the 3rd International Conference on Computer Vision, Pattern Recognition and Image Processing (CVPRIP 2000)*; 212–215.
56. Armon S. Descriptor for shapes and letters (feature extraction). 2012. Available from: www.mathworks.com/matlabcentral/fileexchange/35038-descriptor-for-shapes-andletters-feature-extraction
57. Trier ØD, Jain AK, Taxt T. Feature extraction methods for character recognition—A survey. *Pattern Recognit.* 1996; 29: 641–662.
58. Shaus A, Turkel E, Piasetzky E. Quality evaluation of facsimiles of Hebrew First Temple period inscriptions. *Proceedings of the 10th IAPR International Workshop on Document Analysis Systems (DAS 2012)*; 170–174. <https://doi.org/10.1109/DAS.2012.70>
59. Shaus A, Turkel E, Piasetzky E. Binarization of First Temple period inscriptions—Performance of existing algorithms and a new registration based scheme. *Proceedings of the 13th International Conference on Frontiers in Handwriting Recognition (ICFHR 2012)*; 641–646. <https://doi.org/10.1109/ICFHR.2012.187>
60. Shaus A, Faigenbaum-Golovin S, Sober B, Turkel E, Piasetzky E. Potential contrast—A new image quality measure. *Proceedings of the IS&T International Symposium on Electronic Imaging 2017, Image Quality and System Performance XIV Conference (IQSP 2017)*; 52–58. <https://doi.org/10.2352/ISSN.2470-1173.2017.12.IQSP-226>
61. Fisher RA. *Statistical Methods for Research Workers*. Edinburgh: Oliver and Boyd; 1925.
62. Akiyama T, Miyamoto N, Oguro M, Ogura K. Faxed document image restoration method based on local pixel patterns. *Proceedings of Photonics West '98 Electronic Imaging Symposium*. 1998; 253–262.
63. Ratnakar V. RAPP: Lossless image compression with runs of adaptive pixel patterns. *Conference Record of the Thirty-Second Asilomar Conference on Signals, Systems & Computers*. 1998; 2: 1251–1255.
64. Welch BL. The generalization of “Student’s” problem when several different population variances are involved. *Biometrika*. 1947; 34.1/2: 28–35.
65. Student. The probable error of a mean. *Biometrika*. 1908; 6.1: 1–25.
66. Brown MB. A method for combining non-independent, one-sided tests of significance. *Biometrics* 1975; 31.4: 987–992.
67. Kost JT, McDermott MP. Combining dependent P-values. *Stat Probab Lett*. 2002; 60: 183–190.
68. Beit-Arieh I. Horvat ‘Uza and Horvat Radum: Two Fortresses in the Biblical Negev (Tel Aviv University Monograph Series 25). Tel Aviv University; 2007.
69. Na’aman N. A sapiential composition from Horvat ‘Uza. *Hebrew Bible and Ancient Israel*. 2013; 2: 221–233.
70. Beit-Arieh I, Freud L. *Tel Malhata: A Central City in the Biblical Negev (Tel Aviv University Monograph Series 32)*. Tel Aviv University; 2015.
71. Aharoni Y, editor. *Beer-Sheba I: Excavations at Tel Beer-Sheba, 1969–1971 Seasons*. Tel Aviv University; 1973. pp. 71–75.
72. Beit-Arieh I. *Tel ‘Ira*. *Israel Exploration Journal*. 1981; 31: 224.
73. Beit-Arieh I. A First Temple period census document. *Palest Explor Q*. 1983; 115: 105–108.
74. Lemaire A. Notes d’épigraphie nord-ouest sémitique. *Semítica*. 1980; 30: 19–20.
75. Vritz V. Die ostraka. In: Fritz V, Kempinski A, editors. *Khirbet el-Mšāš*. Wiesbaden; 1983. pp. 133–137.
76. Cohen R. Inscriptions. In: Cohen R, Bernick-Greenberg, editors. *Excavations at Kadesh Barnea (Tell el-Qudeirat) 1976–1982 (IAA Reports 34)*. Jerusalem; 2007. pp. 245–254.
77. Starkey JL. *Lachish I (Tell ed Duweir): Lachish Letters*. Oxford University Press; 1938.
78. Lemaire A. *Les écoles et la formation de la Bible dans l’ancien Israël (OBO 39)*. Fribourg and Göttingen; 1981.
79. Rollston CA. *The Script of Hebrew Ostraca of the Iron Age: 8th-6th Centuries BCE*. PhD Thesis, Johns Hopkins University. 1999.
80. Rollston CA. Scribal education in ancient Israel: The Old Hebrew epigraphic evidence. *Bull Am Schools Orient Res*. 2006; 344: 47–74.
81. Demsky A. *Literacy in Ancient Israel*. Jerusalem: Bialik; 2012 [Hebrew].
82. Na’aman N. Literacy in the Negev in the Late Monarchical Period. In Schmidt BB, editor. *Contextualizing Israel’s Sacred Writings. Ancient Literacy, Orality, and Literary Production (Ancient Israel and Its Literature 22)*. Atlanta; 2015. pp 47–70.

83. Faigenbaum-Golovin S, Shaus A, Sober B, Turkel E, Piasezky E, Finkelstein I. Algorithmic handwriting analysis of the Samaria inscriptions illuminates bureaucratic apparatus in biblical Israel. *PLOS ONE*. 2019; 15.1: e0227452. <https://doi.org/10.1371/journal.pone.0227452>
84. Römer T. *The So-Called Deuteronomistic History: A Sociological, Historical and Literary Introduction*. London: T. & T. Clark; 2005.
85. Na'aman N. *The Past that Shapes the Present: The Creation of Biblical Historiography in the Late First Temple Period and After the Downfall*. Jerusalem: Yeriot; 2002 [Hebrew].
86. Finkelstein I. Jerusalem and Judah 600–200 BCE: Implications for Understanding Pentateuchal Texts. In: Dubovsky P, Markl D, Sonnet JP, editors. *The Fall of Jerusalem and the Rise of the Torah*. Tübingen; 2016. pp. 3–18.