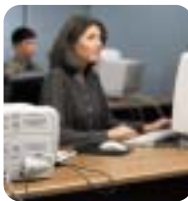
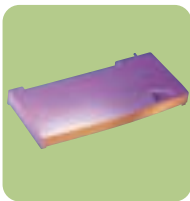


08:13



hp jetdirect – reference guide print server/ internet connectors

networked products

product	network type/port	Microsoft Windows 98, Me, NT 4.0, 2000 and Novell NetWare (1)	Microsoft and Apple Ethernet network environments (2)	Any network operating system (3)	Any network operating system (4)	Firmware upgrade possible	Easy installation using Install network printer wizard	Embedded Web Server	Microsoft Windows 98, 2000, Me, Mac OS 8.6, 9.x, X	Microsoft Windows 98, 2000, Me, XP
hp jetdirect 170x external print server/wireless print server wp110										
3258b	Ethernet/802.3 – 1 parallel	•					•	•	•	•
officeconnect - j4102b	RJ-45 (10Base-T)						•	•	•	•
6062a	802.11b external wireless Ethernet (parallel)						•	•	•	•
hp jetdirect 175x/310x/380x external print server										
6035b	Fast Ethernet/802.3 USB	•					•	•	•	•
	1 USB – RJ-45 (10/100Base-TX)						•	•	•	•
6038a	Fast Ethernet/802.3 USB						•	•	•	•
	1 USB – RJ-45 (10/100Base-TX)						•	•	•	•
6061a	802.11b external wireless Ethernet (USB)						•	•	•	•
hp jetdirect 300x external print server										
3263a	Fast Ethernet/802.3						•	•	•	•
6060a - 3pack	1 parallel						•	•	•	•
officeconnect - j4101b	RJ-45 (10/100Base-TX)						•	•	•	•
hp jetdirect 500x external print server										
3265a	Fast Ethernet/802.3 – 3 parallel						•	•	•	•
	RJ-45 (10/100Base-TX) – BNC (10Base-2)						•	•	•	•
3264a	Token Ring/802.5						•	•	•	•
	3 parallel – D89, RJ-454						•	•	•	•
Bluetooth printer adapter										
MPIA130 (Europe)	1 parallel Bluetooth printer adapter						•	•	•	•
MPIA131 (France)	1 parallel Bluetooth printer adapter						•	•	•	•
MPIA230 (UK)	1 parallel Bluetooth printer adapter						•	•	•	•
MPIA330 (110V)	1 parallel Bluetooth printer adapter						•	•	•	•
hp jetdirect 400n internal print servers - MIO slotted printers and copy modules										
4100a	Fast Ethernet/802.3						•	•	•	•
	BNC (10Base-2) - RJ-45 (10/100Base-TX)						•	•	•	•
4105a	Token Ring/802.5						•	•	•	•
	D89, RJ-45						•	•	•	•
4106a	Ethernet/802.3 – RJ-45 (10Base-1)						•	•	•	•
hp jetdirect 600n (x2)/610n/615n/680n internal print servers - EIO slotted printers and copy modules										
3110a	Ethernet/802.3 – RJ-45 (10Base-1)						•	•	•	•
3111a	Ethernet/802.3 – BNC (10Base-2)						•	•	•	•
	RJ-45 (10Base-1) – LocalTalk System 7						•	•	•	•
4167a	Token Ring/802.5 – D89, RJ-45						•	•	•	•
6057a	Fast Ethernet/802.3 – RJ-45 (10/100Base-TX)						•	•	•	•
6058a	802.11b internal wireless Ethernet						•	•	•	•
hp jetdirect 200m/250m/280m internal print servers - LIO slotted printers and copy modules										
6039b	Fast Ethernet/802.3						•	•	•	•
	RJ-45 (10/100Base-TX)						•	•	•	•
6042b	Fast Ethernet/802.3						•	•	•	•
	RJ-45 (10/100Base-TX)						•	•	•	•
6044a	802.11b internal wireless						•	•	•	•
hp jetdirect connectivity card - USB, serial and localtalk (no network connection required) for EIO slotted printers										
4135a	More reliable than standard USB-to-parallel or serial-to-adaptor cables						•	•	•	•

Connect HP LaserJet printers with an EIO slot to a mix of office workstations, home PCs or Apple Macs through the card's USB, serial and/or LocalTalk ports. Built-in printer buffering so devices share printers simultaneously.

(1) **Compatible Network Operating Systems and Protocols: TCP/IP Direct Mode** Microsoft Windows 95, 98, Me, NT 4.0, 2000, Novell NDPS, NFS – **FTP Printing** Microsoft Windows 95, 98, Me, NT 4.0, 2000, HP-UX 10.20, 11.x, Solaris 2.5x, 2.6, 7, 8, IBM AIX 3.2.5 and later, MacOSX 4.1.x and later, Red Hat Linux 6.x, SuSE Linux 6.x, SunOS 4.1.x, OS/2 Warp 4.x, SGI IRIX 6.x, Digital UNIX 4.x, SCO UnixWare 7.x, OpenServer 5.x – **IPX/SPX** Novell NetWare 3.20, 4.x, 5.x, NDPS, NFS, Microsoft Windows 95, 98, Me, NT 4.0, 2000 – **DEC/LIC** Microsoft Windows NT 4.0, Artisoft LANtastic – **Other Network Protocols Supported** NFS, NCP, Telnet, SLIP, IGMP, BOOTP/DHCP, WINS, SNMP, HTTP

(2) **Compatible Network Operating Systems and Protocols: TCP/IP Direct Mode** – Microsoft Windows 98, Me, NT 4.0, 2000, XP, XP 64-bit – **IPX/SPX [Direct Mode only, no Novell server support]** Microsoft Windows 98, Me, NT 4.0, 2000, XP, XP 64-bit – **AppleTalk** Apple Mac OS 8.6 and later – **Other Network Protocols Supported** BOOTP/DHCP, WINS, SNMP v1 & v2, HTTP, SLIP, IGMP

(3) **Compatible Network Operating Systems and Protocols: TCP/IP Direct Mode** Microsoft Windows 98, Me, NT 4.0, 2000, XP, XP 64-bit, Novell NDPS, HP-UX 10.20, 11.x, Solaris 2.5x, 2.6, 7, 8 (SPARC systems only), IBM AIX 3.2.5 and later, IPEX-LPD (line printer daemon) Microsoft Windows 98, Me, NT 4.0, 2000, XP, XP 64-bit, Novell NetWare 4.2, 5.x, 6, Apple Mac OS 8.6 and later, Red Hat Linux 6.x and later, SuSE Linux 6.x and later, HP-UX 10.20, 11.x, Solaris 2.5x, 2.6, 7, 8, SunOS 4.1.x, IBM AIX 3.2.5 and later, SCO UnixWare 7.x, OpenServer 5.x, SGI IRIX 6.x, Digital UNIX 4.x, IBM OS/2 Warp 4.x, Any RISC/1179-compliant system – **FTP Printing** Microsoft Windows 98, Me, NT 4.0, 2000, XP, XP 64-bit, Apple Mac OS 8.6 and later, Red Hat Linux 6.x and later, HP-UX 10.20, 11.x, Solaris 2.5x, 2.6, 7, 8, SunOS 4.1.x, IBM AIX 3.2.5 and later, SCO UnixWare 7.x, OpenServer 5.x, SGI IRIX 6.x, Digital UNIX 4.x, IBM OS/2 Warp 4.x, Any RISC/1179-compliant system – **IPX/SPX** Novell NetWare 3.2, 4.2, 5.x, 6, NDPS, Microsoft Windows 98, Me, NT 4.0, 2000, XP, XP 64-bit – **DEC/LIC** Microsoft Windows NT 4.0.1 – **AppleTalk** Apple Mac OS 8.6 and later – **Advanced Security** Management System, WEP encryption (40/64 and 128-bit), 802.1x authentication (EAP/PEAP, LEAP, EAP/TLS, EAP/TIS, EAP/MD5) with RADIUS servers – **Other Network Protocols Supported** NFS, Bindey, NCP, Telnet, SLIP, IGMP, NDPS, WINS, SNMP v1 & v2, HTTP

(4) **Compatible Network Operating Systems and Protocols: TCP/IP Direct Mode** Microsoft Windows 98, Me, NT 4.0, 2000, XP, XP 64-bit, Novell NDPS, HP-UX 10.20, 11.x, Solaris 2.5x, 2.6, 7, 8 (SPARC systems only), IBM AIX 3.2.5 and later, IPEX-LPD (line printer daemon) Microsoft Windows 98, Me, NT 4.0, 2000, XP, XP 64-bit, Novell NetWare 4.2, 5.x, 6, Apple Mac OS 8.6 and later, Red Hat Linux 6.x and later, SuSE Linux 6.x and later, HP-UX 10.20, 11.x, Solaris 2.5x, 2.6, 7, 8, SunOS 4.1.x, IBM AIX 3.2.5 and later, SCO UnixWare 7.x, OpenServer 5.x, SGI IRIX 6.x, Digital UNIX 4.x, IBM OS/2 Warp 4.x, Any RISC/1179-compliant system – **FTP Printing** Microsoft Windows 98, Me, NT 4.0, 2000, XP, XP 64-bit, Apple Mac OS 8.6 and later, Red Hat Linux 6.x and later, HP-UX 10.20, 11.x, Solaris 2.5x, 2.6, 7, 8, SunOS 4.1.x, IBM AIX 3.2.5 and later, SCO UnixWare 7.x, OpenServer 5.x, SGI IRIX 6.x, Digital UNIX 4.x, IBM OS/2 Warp 4.x, Any RISC/1179-compliant system – **IPX/SPX** Novell NetWare 3.2, 4.2, 5.x, 6, NDPS, Microsoft Windows 98, Me, NT 4.0, 2000, XP, XP 64-bit – **DEC/LIC** Microsoft Windows NT 4.0.1 – **AppleTalk** Apple Mac OS 8.6 and later – **Advanced Security** Management System, WEP encryption (40/64 and 128-bit), 802.1x authentication (EAP/PEAP, LEAP, EAP/TLS, EAP/TIS, EAP/MD5) with RADIUS servers – **Other Network Protocols Supported** NFS, Bindey, NCP, Telnet, SLIP, IGMP, NDPS, WINS, SNMP v1 & v2, HTTP

* Requires software from the NOS vendor. May require software from the NOS vendor and/or 3rd party vendor. * AppleTalk not supported in Token Ring printer servers. * Applies to fullfeature HP Jetdirect products with firmware version x.22.y or later - EIO (610n, 615n Series and later), I/O (250m), External USB (310x and 380x). * Applies to wireless products only

